

SpotCooler C-series



Quiet operation



Temperature zones



Frost-free



Infrared temperature control



Ready for Modbus connection



Applies to European directive for energy related products



SpotCooler C1	2,0 meter display rack	approx 5m ² display area
SpotCooler C2	3,5 meter display rack	approx 10m ² display area
SpotCooler C3	5,0 meter display rack	approx 15m ² display area

Optional



Energy efficient led lighting

Versions

- R404A/R507/R407A
- R407C
- R134A
- R744
- Brine version for inlet temperatures above 0,0°C
- Brine version for inlet temperatures below 0,0°C

Your SpotCooler dealer



Fresh fruit



Safety



Environment

SpotCooler C-series

MEASUREMENTS AND WEIGHT		C1	C2	C3
Total display area(TDA) ₁	m ²	5	10	15
Length	mm	2010	3645	5280
Width	mm	1410	1410	1410
Height	mm	380	380	380
Minimum ceiling height	mm	2700	2700	2700
Recommended installation height (floor to underneath SpotCooler)	mm	2100	2100	2100
Net weight (excl. Brine filling)	kg	77	144	211
COOLING SPECIFICATIONS				
Ambient temperature range	°C	15-25	15-25	15-25
Display rack temperature range	°C	7-15	7-15	7-15
Brine	Type	Water/Glycol	Water/glycol	Water/glycol
Internal brine volume ₄	liter	30	60	90
External brine temperature range ₅	°C	-20 til 0	-20 til 0	-20 til 0
Cooling capacity consumption ₂	Watt	5000	9400	14100
Maximum working pressure	bar	3	3	3
ELECTRICAL SPECIFICATIONS				
Voltage	V/Hz	230/50	230/50	230/50
Nominal electrical power consumption	Watt	220	350	550
IP class	class	IP21	IP21	IP21
ENVIROMENT				
Total annual power consumption	kWh	11500	21000	30500
Temperature zones		1	2	3

1) Total display areal are dependent on the display rack that are used, table states typical value

2) At 9°C display rack temperature and 20°C ambient temperature

3) At 9°C display rack temperature, 20°C ambient temperature and chiller ESEER of 4, 365 day continous duty

4) All SpotCooler C-Series features an internal brine circuit. R134A, R404A, R507, R407A and R407C systems does include a plate heat exchanger for compability with the choosen gas. Mechanical expansion valve are also included except from R744 versions.

5) This applies to the brine versions of the system



Fresh fruit



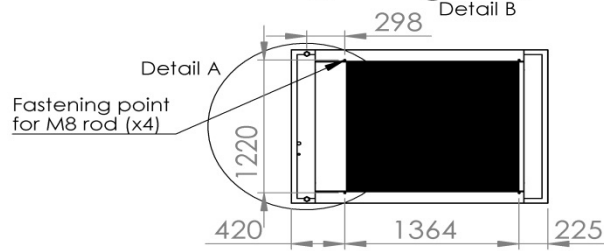
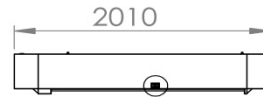
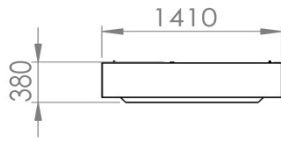
Safety



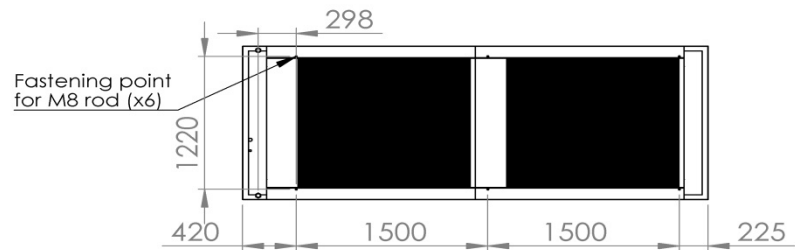
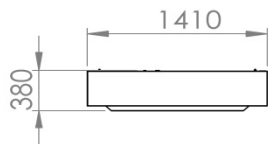
Environment

SpotCooler C-series

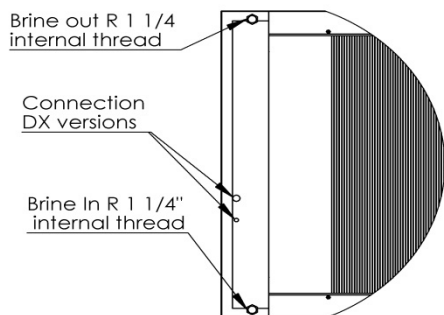
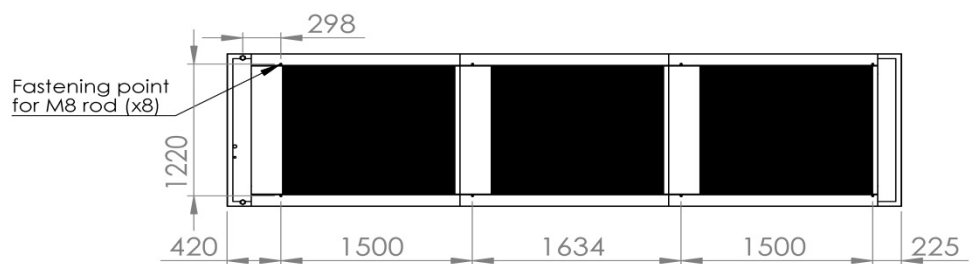
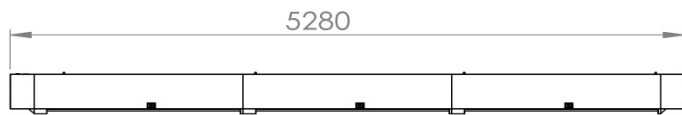
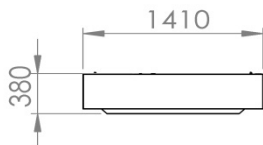
SCC1



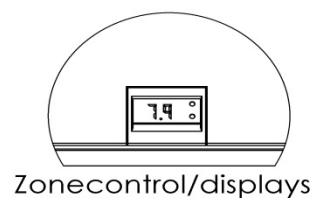
SCC2



SCC3



Detail B



Zonecontrol/displays



Fresh fruit



Safety



Environment